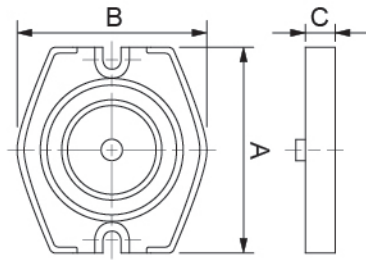




35061

迴轉底座 SWIVEL BASE



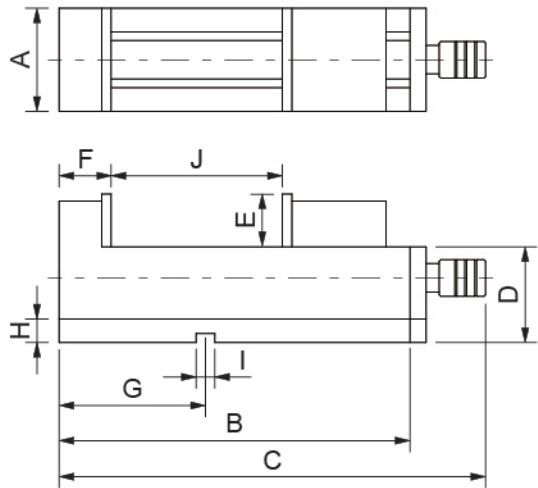
- 適合配合HV、HB、HC型油壓虎鉗使用。
- 刻度每一小隔為一度,可360度旋轉。
- 附有虎鉗固定螺絲一組。
- Fit with the HV, HB, HC-type hydraulic vise.
- Each compartment is one scale, can rotate 360 degrees.
- One set screw is included.

單位: mm

訂購編號 Order No.	型號 Model	A	B	C	適用機種 Adaptable models	重量(kg) Weight
35061-02	400S	270	240	40.7	HV400.HB400.HN400	6
35061-04	500S	292	267	44	HV500	8
35061-06	600S	330	300	40.8	HV600.HB600.HN600	10
35061-08	800S	380	345	42.2	HV800.HN800	15
35061-10	500SC	280	266	32	HC500	9
35061-12	600SC	330	310	35	HC600	15
35061-14	800SC	375	355	40	HC800	23
35061-16	1000SC	460	420	50	HC1000	32

35062

精密油壓角固虎鉗 MC COMPACT MECHANICAL/HYDRAULIC VISE



- 新開發專利油壓泵無故障可輕易得到高夾持力。
- 全新防塵蓋設計,可防止切削屑所引起的動作不良。
- 較同等級虎鉗有近兩倍的開口,可輕易夾持較長工件。
- 較同等級虎鉗鉗口深,可確實夾持較高之工件。
- 內藏防止上浮機構:夾持時往下方的力亦作動,因此工件及可動體的上浮極小。
- Non-trouble hydraulic pump of new development patented which gives greater clamping force easily.
- Chip cover adopted, preventing chips falling into causing bad motion.
- Double opening than those of same grade vise. Can easy clamp longer work piece.
- The jaw more deeper than those of same grade vise. Can clamping higher work piece correctly.
- This unit had prevent lifting structure, when clamping in down direction power also acting, so workpiece movable parts lift very small.

單位: mm

訂購編號 Order No.	型號 Model	A	B	C	D	E	F	G	H	I	J	L	夾持力(kgf) Power	重量(kg) Weight
35062-04	MHV-100V	100	400	535	85	45	80	110	23	18	125	106	2500	32
35062-05	MHV-130V	130	450	585	95	50	85	135	23	18	180	117	3500	45
35062-06	MHV-160V	160	550	685	105	60	103	200	23	18	240	146	4400	63
35062-08	MHV-200V	200	600	735	110	65	108	220	23	18	280	190	5500	92