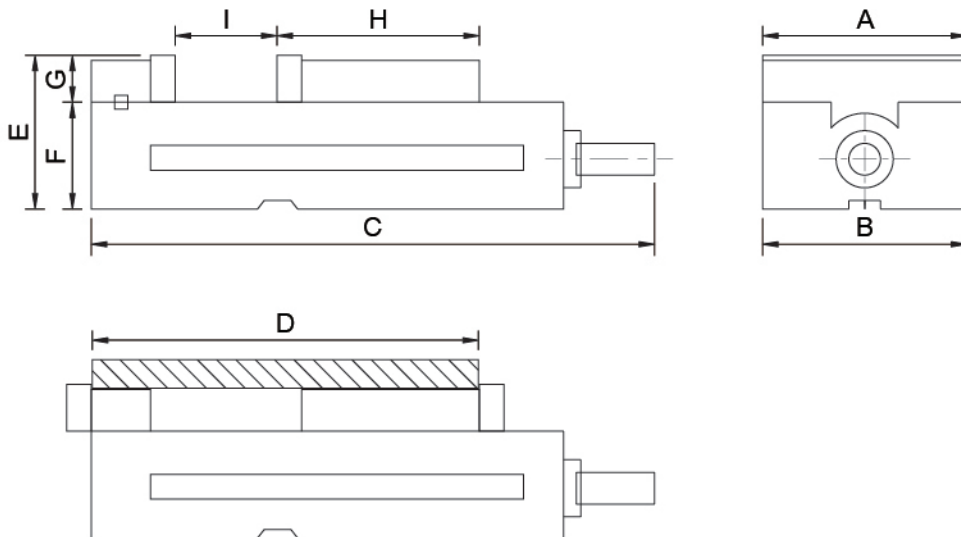


- 虎鉗本體側面和端面都有經過精密研磨,可側面放置,來夾持加工,也不會影響到精度.
- 角固型設計,使你在夾持工件時,虎口自然向下鎖緊.
- 平行度/垂直度100mm/0.02mm內



- Here is the "just right" vise for use on all your tape controlled machine tools. This slightly modified version of the famous AUTO-WELL Lock Well vise has most of our sought-after features including the exclusive LOCK DOWN principle which guarantees that the movable jaw stays securely down during machining.
- What the vise doesn't have is a coolant through. This enables you to anchor a series of these vises snugly side-by-side on the machine bed. A number of similar parts can be clamped and machined at the same time, with minimum center-to-center machining distance. Up goes your production rate. Down go costs.
- PARELLEL:0.02MM/100MM
- PERPENDICULARITY:0.02/100MM

單位: mm

| 訂購編號 Order No. | 型號 Model | A | B | C | D | E | F | G | H | I | L | 重量(kg) Weight |
|-------------------|-------------|-----|-----|-----|-----|-----|-----|----|-----|-----|-----|------------------|
| 35030-40 | MCL-40G | 105 | 107 | 305 | 280 | 100 | 64 | 36 | 120 | 105 | 276 | 13 |
| 35030-50 | MCL-50G | 125 | 128 | 360 | 320 | 120 | 70 | 50 | 135 | 120 | 320 | 23 |
| 35030-60 | MCL-60G | 150 | 155 | 430 | 378 | 125 | 78 | 47 | 160 | 148 | 380 | 37 |
| 35030-80 | MCL-80G | 198 | 205 | 560 | 510 | 200 | 132 | 68 | 190 | 210 | 485 | 65 |