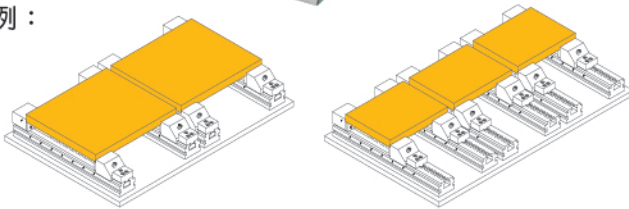
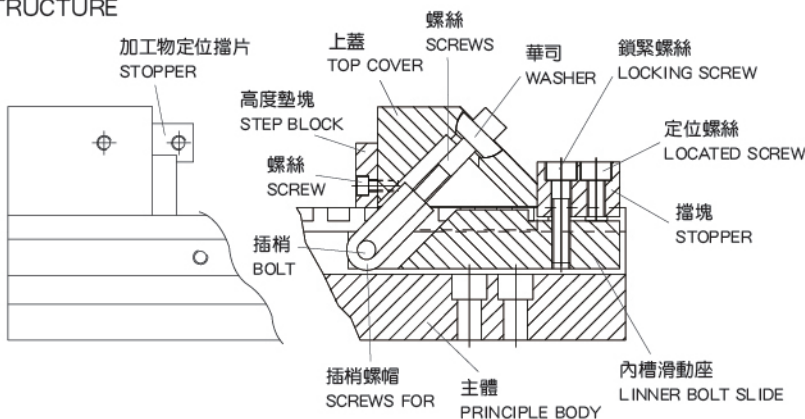


■ 多台共用夾持範例：  
FOR EXAMPLE

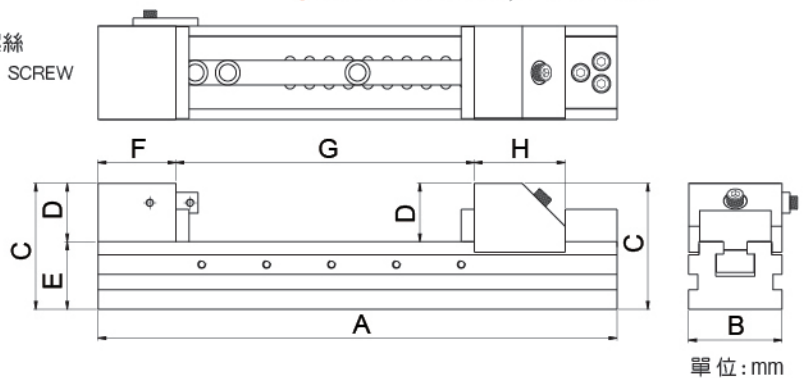
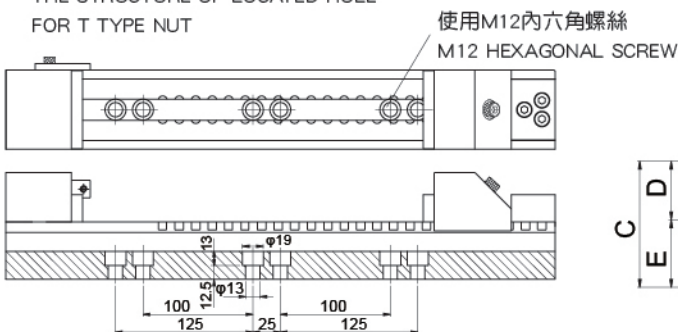


■ 結構示意圖：  
STRUCTURE



■ T型螺帽定位孔結構示意圖：

THE STRUCTURE OF LOCATED HOLE  
FOR T TYPE NUT



- 適用CNC銑床及一般銑床，夾持工件加工。
- 本體採用鋼材一體成型製造，鋼性強精密度高，耐磨性較一般鑄鐵虎鉗佳。
- 活動式虎口定位設計，可隨意快速移動調整夾持位置，定位穩定。
- 附高度墊塊3組，加工物高度不同規格時可配合使用。
- 精密加工製造，保證其品質及精度。
- 平行度:100mm/0.005mm內。
- 垂直度:100mm/0.01mm內。
- 材質S50C，硬度HRC54-57°。
- IT SUITS TO CLAMP THE WORKPIECE FOR CNC MILLING MACHINE.
- THE PRINCIPAL BODY WAS MADE OF STEEL IN ONE FORM WITH HIGH STEEL AND PRECISION.THE WEAR-RESISTING IS BETTER THAN THE IRON VISE.
- MOVEABLE JAWS DESIGNED! TO BE LOCATE D FAST AND AS YOUR PLEAS!
- 3 PCS OF GAUGE BLOCK ARE FREE. IT SUITS FOR DIFFERENT HEIGHT OF WORKPIECE.
- IT'S MANUFACTURED WITH HIGH PRECISION. QUALITY AND PRECISION IS GUARANTEED.
- PARELLEL:0.005MM/100MM
- PERPENDICULARITY:0.01/100MM
- MATERIAL:S50C, HRC: 54-57

訂購編號 Order No.	型號 Model	A	B	C	D	E	F	G	H	重量(kg) Weight
35028-03	CNC-730	300	72	97	45	52	60	0~130	70	12
35028-04	CNC-740	400						0~230		13
35028-05	CNC-750	500						0~330		15
35028-13	CNC-1030	300	100	127	55	72	62	0~103	87	20
35028-14	CNC-1040	400						0~203		24
35028-15	CNC-1050	500						0~303		27
35028-16	CNC-1060	600						0~403		31