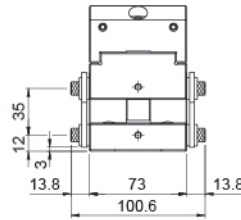
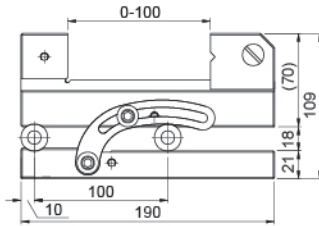
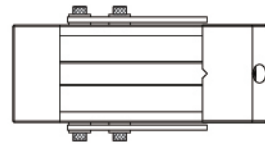
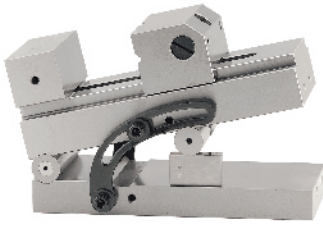




33060

正弦工具萬力 SINE VISE



- 正弦開口設計，操作簡易，精密度高且穩固。
- 旋轉彈簧結構設計，夾持方便，配合墊塊使用可調整至多種角度，作精密角度加工研磨。

- Sine openings designed, simple operation、high precision and robust.
- Rotary spring is easy to grip. You can adjust a variety of angles with adjustable block for precision grinding.

■ 規格:

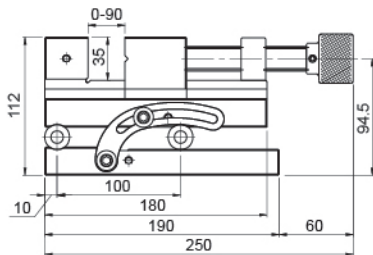
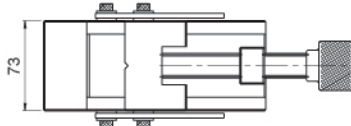
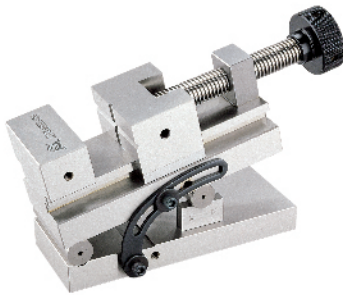
- 材質：SK2
- 硬度：HRC56° ±2
- 最大調整角度：46°
- 平行度：100mm/0.005mm內
- 垂直度：100mm/0.005mm內

■ Feature:

- Material：SK2
- Hardness：HRC56° ±2
- Max. anglet：46°
- Parallelism within 0.005mm/100mm
- Squareness within 0.005mm/100mm

33065

正弦工具萬力 SINE VISE



- 正弦開口設計，操作簡易，精密度高且穩固。
- 握把式旋轉，夾持方便，配合墊塊使用可調整至多種角度，作精密角度加工研磨。

- Adjustable sine openings designed, simple operation、high precision and robust.
- Rotary handle is easy to grip. You can adjust a variety of angles with adjustable block for precision grinding.

■ 規格:

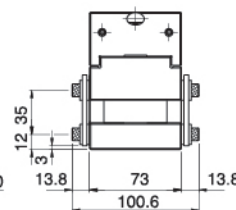
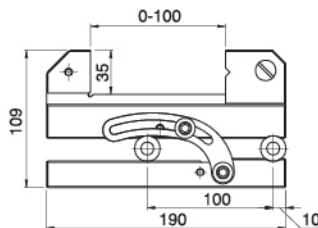
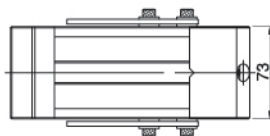
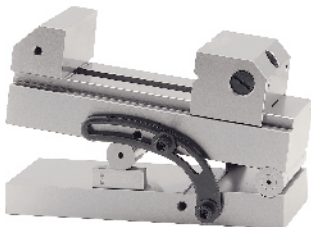
- 材質：SK2
- 硬度：HRC56° ±2
- 最大調整角度：46°
- 平行度：100mm/0.005mm內
- 垂直度：100mm/0.005mm內

■ Feature:

- Material：SK2
- Hardness：HRC56° ±2
- Max. anglet：46°
- Parallelism within 0.005mm/100mm
- Squareness within 0.005mm/100mm

33070

正弦工具萬力 SINE VISE



- 反向正弦開口設計，提供一般角度無法夾持或干涉時使用，操作簡易，精密度高且穩固。
- 旋轉彈簧結構設計，夾持方便，配合墊塊使用可調整至多種角度，作精密角度加工研磨。

- Reverse sine openings designed to provide general angle that can't be clamped. Use with the interference, is simple to operation, high precision and robust.
- Rotary spring is easy to grip. You can adjust a variety of angles with adjustable block for precision grinding.

■ 規格:

- 材質：SK2
- 硬度：HRC56° ±2
- 最大調整角度：46°
- 平行度：100mm/0.005mm內
- 垂直度：100mm/0.005mm內

■ Feature:

- Material：SK2
- Hardness：HRC56° ±2
- Max. anglet：46°
- Parallelism within 0.005mm/100mm
- Squareness within 0.005mm/100mm