

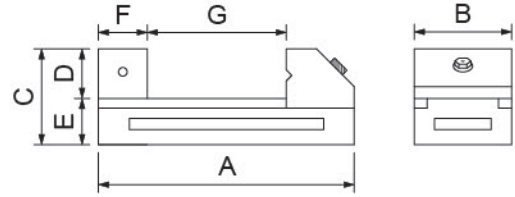
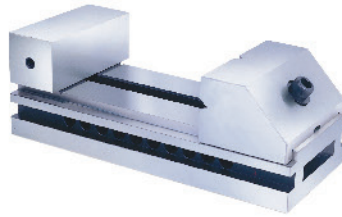
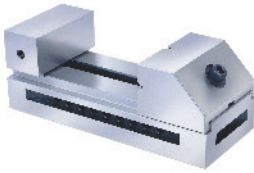


### 33006

### 工具萬力 (普級品) TOOL MAKER VISE (GENERAL TYPE)

● VD-20.25.30.40.50

● VD-60



- 平行度:0.003MM/100MM內，
- 垂直度:0.005MM/100MM內。
- 材質:S50C，硬度:HRC54°±2。

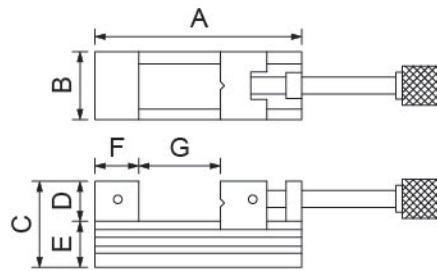
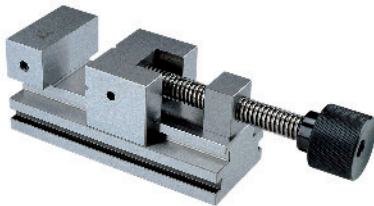
- Parallelism within:0.003MM/100MM.
- Squareness within:0.005MM/100MM.
- Material:S50C，Hardness:HRC54°±2.

單位:mm

訂購編號 Order No.	型號 Model	A	B	C	D	E	F	G	重量(kg) Weight
33006-20	VD-20	150	50	53	25	28	30	0-80	1.8
33006-25	VD-25	175	63	63	32	31	35	0-90	3.3
33006-30	VD-30	190	73	70	35	35	35	0-100	4.3
33006-40	VD-40	245	100	90	45	45	45	0-130	10
33006-50	VD-50	285	125	100	50	50	45	0-160	15
33006-60	VD-60	330	150	100	50	50	50	0-180	20

### 33010

### 工具萬力(高級品) TOOL MAKER VISE (HIGH-LEVEL TYPE)



- Grip designed, rotating the handle to adjust hostage of work piece.
- Hexagon hole designed of hand wheel, available for pressure locking with hex wrench.
- Unidirectional bevel designed, can be automatically corrected the deformation of the main body.
- Parallelism within:0.003MM/100MM. Squareness within:0.004MM/100MM.
- Material:SK2，Hardness:HRC56°±2.

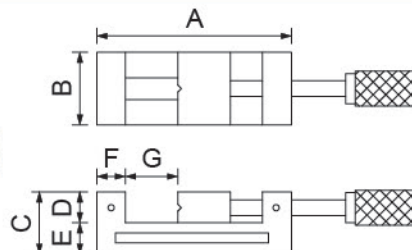
- 握把式設計，可任意的旋轉把手，調整挾持工件大小。
- 把手輪有內六角孔設計，可供六角扳手加壓鎖緊使用。
- 單向斜角設計，能夠自動校正主體的變形量。
- 平行度:0.003MM/100MM內  
垂直度:0.004MM/100MM內。
- 材質:SK2，  
硬度:HRC56°±2。

單位:mm

訂購編號 Order No.	型號 Model	A	B	C	D	E	F	G	重量(kg) Weight
33010-20	MCL-A20	140	48	55	30	25	25	0-75	2.7
33010-25	MCL-A25	162	63	69	39	30	30	0-85	4.6
33010-30	MCL-A30	182	73	78	43	35	35	0-95	6.4
33010-40	MCL-A40	235	98	92	47	45	40	0-130	13

### 33012

### 工具萬力 (普級品) TOOL MAKER VISE (GENERAL TYPE)



- 平行度:0.003MM/100MM內，
- 垂直度:0.005MM/100MM內。
- 材質:S50C，硬度:HRC54°±2。
- Parallelism within:0.003MM/100MM.
- Squareness within:0.005MM/100MM.
- Material:S50C，Hardness:HRC54°±2.

單位:mm

訂購編號 Order No.	型號 Model	A	B	C	D	E	F	G	重量(kg) Weight
33012-20	VA-20	156	48	52	25	27	25	0-65	2.5
33012-25	VA-25	176	63	63	32	33	30	0-75	4.5
33012-30	VA-30	190	73	73	35	38	35	0-79	6
33012-40	VA-40	255	98	82	40	42	40	0-124	12