



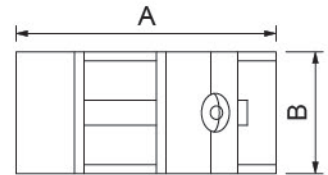
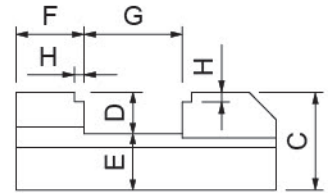
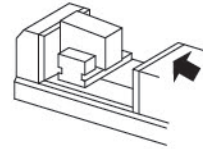
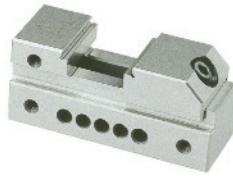
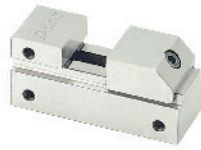
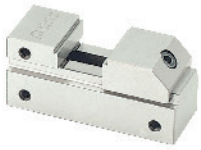
33004

小型工具萬力 TOOL MAKER VISE (SMALL)

● MCL-V10V

● MCL-V10

● MCL-V15V



單位: mm

- 小型精密工具萬力，虎口有一凹槽設計，適合夾持細小的薄板之精密加工。
- 平行度:0.003MM內，垂直度:0.004MM內。
- 材質:SK2，硬度:HRC56°±2。
- The Small Precision vise, and there' s groove designed on the jaws, for gripping small sheet on working.
- Parallelism within:0.003MM/100MM. Squareness within:0.004MM/100MM.
- Material:SK2，Hardness:HRC56°±2.

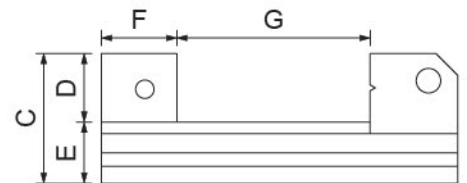
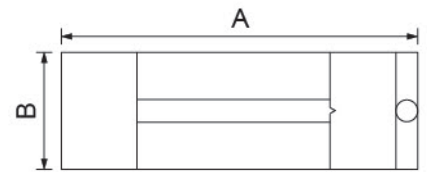
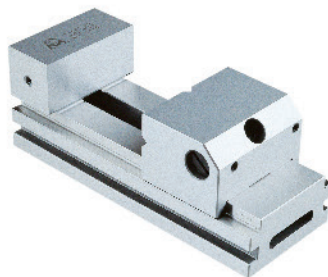
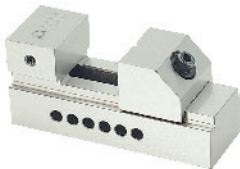
訂購編號 Order No.	型號 Model	A	B	C	D	E	F	G	H	重量(kg) Weight
33004-10	MCL-V10V	65	25	30	10	20	18.5	0 - 20	1.6	0.3
33004-12	MCL-V10	65	25	30	10	20	18.5	0 - 20	-	0.3
30004-15	MCL-V15V	100	35	45	20	25	25	0 - 45	2.5	0.9

33005

工具萬力(高級品)TOOL MAKER VISE(HIGH-LEVEL TYPE)

● MCL-V15

● MCL-V20.25.30.40.50.60



- 專利旋轉彈簧活動設計，可輕易快速的移動調整夾持位置。
- 單向斜角設計，能夠自動補正主體的變形量。
- 平行度:0.003MM內，垂直度:0.005MM內。
- 材質:SK2，硬度:HRC56°±2。
- The patented rotary spring designed, the position can be moved and adjusted easily and fast.
- Single bevel designed, the deformation of the main body can be automatically corrected.
- Parallelism within:0.003MM/100MM. Squareness within:0.005MM/100MM.
- Material:SK2，Hardness:HRC56°±2.

單位: mm

訂購編號 Order No.	型號 Model	A	B	C	D	E	F	G	重量(kg) Weight
33005-15	MCL-V15	100	35	45	20	25	25	0 - 45	0.9
33005-20	MCL-V20	140	48	50	25	25	25	0 - 75	1.6
33005-25	MCL-V25	172	63	60	30	30	32	0 - 90	3.7
33005-30	MCL-V30	190	73	70	35	35	35	0 - 100	4.6
33005-40	MCL-V40	230	98	80	40	40	40	0 - 125	7.6
33005-50	MCL-V50	300	125	98	48	50	60	0 - 160	16.0
33005-60	MCL-V60	350	150	100	50	50	60	0 - 210	22.6