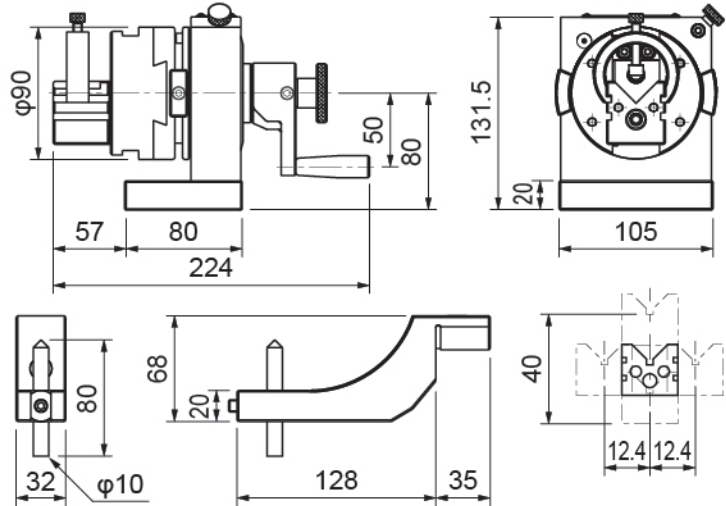




● MCL-450



- 雙向沖子研磨器，除了有MCL-350的功能外，其特點為增加左右雙向滑板功能。
- 操作時將把手後面之壓花握把向後旋轉出來，轉動把手就可簡單的增加其左右雙向功能。
- 圓形、圓弧形、多角外形，各種異形狀的沖子刀口，按等份角度調整分割，不需中途取下即可完成所需的角或圓弧。
- 加工各種角度之沖子刀口，使用平砂輪，也可配合需要按等份角度迴轉，並調整X軸(左右) Y軸(上下)方向等，大部份沖子只要一次固定，不需中途取下就可完成，成型研磨。
- 標準配件成型臂及鑽石筆，可容易修整砂輪凹凸R，及各種成形角度，不需再有其他修整器。

■規格:

- 分割24等份.分度15度.±10"
- 旋轉中心高:80mm
- V型塊夾持範圍直徑:φ3-φ30mm
- V型塊活動範圍:上24mm/下16mm
- V型塊左右活動範圍:各12.4mm
- 凸R修整範圍:48mm
- 凹R修整範圍:100mm
- 最大迴旋直徑:200mm
- 夾持圓棒偏擺度2μ內
- 夾持圓棒偏擺度(50mm長)6μ內
- 重量:10kg

■標準配件:

1. C型夾1只
2. 弓柄1支
3. 10×80L鑽石筆1支
4. 4mmT型板手1支
5. 六角板手3mm×1支,5mm×1支

■選購配件:

1. 31036 MCL-350-1角度修整器

- MCL-450 punch former, in addition functions of MCL-350, which feature an increase of two-way slide function.
- Behind handle the embossing grip backward rotation out, turn the handle easy to increase two-way function.
- Circular, arc-shaped, polygonal shape ' other various shapes of punch, divided by equal parts angle adjustment, do not need remove to complete the shape.
- Processing various angles of punch, use flat wheel, also can used with equal parts required by rotation, adjustment direction X-axle(both sides) Y-axle(up/down), do not need remove to complete the shape.
- Standard accessories dressing arm and diamond pen, easy to dressing wheel, do not need any other dresser.

■Specifications:

- Indexing Div: 24(Every 15°)±10 seconds
- Center height: 80mm
- V-block Clamp range: φ3-φ30mm
- The activities of V-block:Up 24mm/Down 16mm
- Both sides activities of V-block: 12.4mm each
- The dressing range of convex angle: 48mm
- The dressing range of concave angle: 100mm
- Maximum swing diameter: 200mm
- The deflection with round rod: under 2μ
- The deflection with 50mm round rod: under 6μ
- Weight:10kg

■Standard Accessory:

1. C type clip-- 1 piece
2. Dressing arm handle-- 1 piece
3. 10×80L Diamond pen-- 1 piece
4. 4mm T type spanner-- 1 piece
5. Hexagon type spanner-- 3mm*1 piece.5mm*1 piece

■Optional accessory:

1. 31036 MCL-350-1 ANGLE DRESSER

