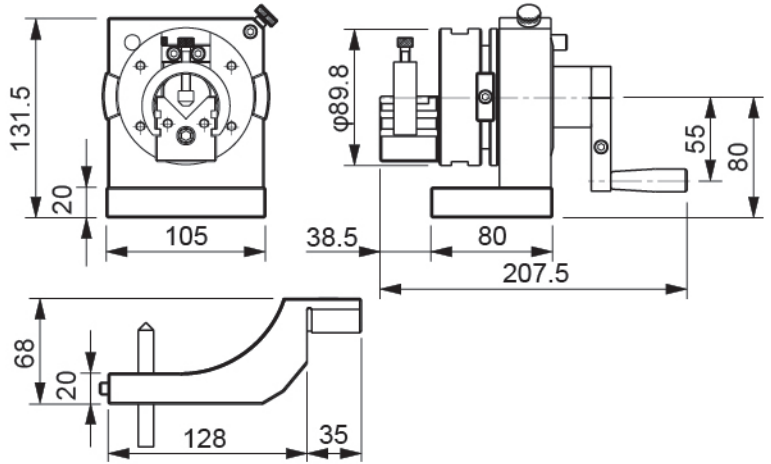
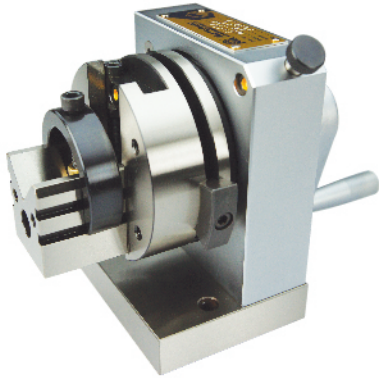




● MCL-350



- 沖子研磨器是研磨標準沖子頭刀口(PPOINT)之工具。
- 其特點本體有中心穿孔，可供較長的沖頭及稍延伸而過，而得以挾持加工。
- 無論圓形，圓弧形，多角形外，各種角度之沖子刀口，按等份角度分割，不需中途取下，就可完成你所需要的角度或圓弧。
- 配合弓柄，即可做為修整砂輪的的凹凸R和角度。

■規格:

- 分割24等份.分度15度.±10"
- 旋轉中心高:80mm
- 主體可穿過部位最大直徑:30mm
- V型塊挾持範圍直徑:φ3~φ30mm
- V型塊活動範圍:上24mm/下16mm
- 凸R修整範圍:48mm
- 凹R修整範圍:100mm
- 最大迴旋直徑:200mm
- 夾持圓棒偏擺度2μ內
- 夾持圓棒偏擺度(50mm長)6μ內
- 重量:9.5kg

■標準配件:

1. C型夾1只
2. 弓柄1支
3. 10×80L鑽石筆1支
4. 4mmT型板手1支
5. 六角板手3mm×1支,5mm×1支

■選購配件:

1. 31036 MCL-350-1角度修整器

- Punch grinder is the tool to grind the blade of standard Punch Head.
- Feature: There's through whole on the body for a longer punches extension and shoot over. To be held hostage by processing.
- Whether round, arc-shaped, polygonal, the various angles of the punch blade, you can divided the angle by equal parts to complete the required angle or arc without taking off the blade on working.
- With the bow, the wheel can be dressed convex and concave angle.

■Specifications:

- Indexing Div: 24(Every 15°)±10 seconds
- Center height: 80mm
- The max diameter can pass through: 30mm
- V-block Clamp range: φ3-φ30mm
- The activities of V-block:Up 24mm/Down 16mm
- The dressing range of convex angle: 48mm
- The dressing range of concave angle: 100mm
- Maximum swing diameter: 200mm
- The deflection with round rod: under 2μ
- The deflection with 50mm round rod: under 6μ
- Weight:9.5kg

■Accessory:

1. C type clip--- 1 piece
2. Dressing arm handle-- 1 piece
3. 10×80L Diamond pen-- 1 piece
4. 4mm T type spanner-- 1 piece
5. Hexagon type spanner-- 3mm\*1 piece.5mm\*1 piece

■Optional accessory:

1. 31036 MCL-350-1 ANGLE DRESSER



沖頭研磨 Punch Forming	修整砂輪外徑 Grinding wheel radius dressing	修整砂輪角度 Grinding wheel angular dressing	適用各種形狀砂輪之修整 Grinding wheel dressing application
			<p>適用各種形狀沖頭之修整 Punch forming application</p>