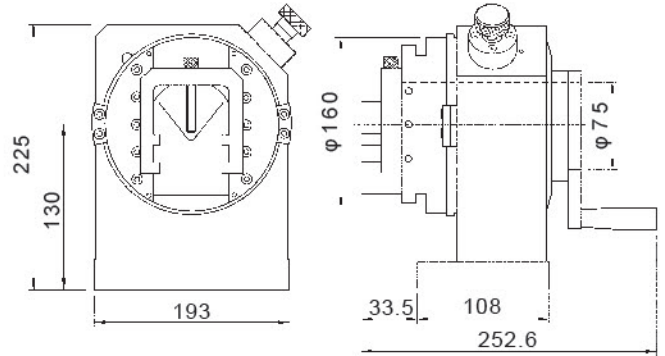
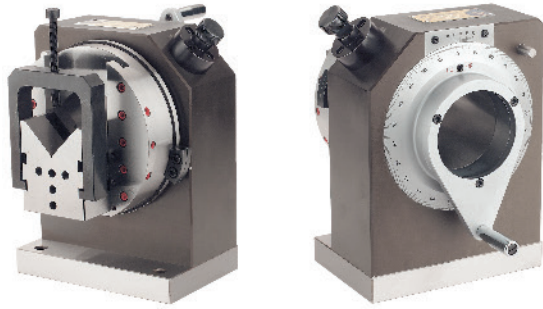




31030

大型沖子研磨器 PUNCH FORMER (ONE WAY)

● MCL-3500



- 適合研磨直徑70MM以下的大型沖子頭，較適用於818以上的平面磨床機台。
- V型塊設計穩固，可精確的固定工件物，並有上下微調功能。
- 本體有中心穿孔設計，可供較長的沖頭及梢延伸而過，而得以挾持加工。
- MCL-3500 is adaptable on surface grinder above 818mm<sup>2</sup> to clamp punches within  $\phi$  70mm for grinding various shapes.
- The V-block with fine tuning function can fix workpiece steadily and accurately.
- Design of a through hole, for a longer extension of the punch and shoot over, and be held hostage by working.

■規格:

- V型塊最大挾持範圍:  $\phi$  70mm
- V型塊上下調整範圍: 各30mm
- 分割24等份、分度 $15^{\circ} \pm 5^{\circ}$
- 重量:23.6kg

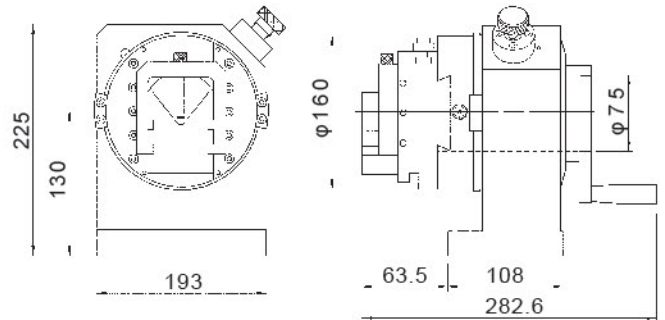
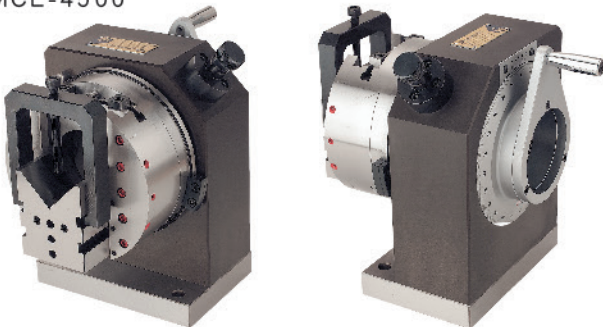
■Specifications:

- Max champing diameter in V-slot:  $\phi$  70mm
- Travel of V-block:30mm
- Quantity of tooth:24
- Accuracy of disk: $15^{\circ} \pm 5^{\circ}$
- Weight:23.6kg

31032

雙向大型沖子研磨器 PUNCH FORMER (TWO WAY)

● MCL-4500



- 雙向活動設計，適合818平面磨床上研磨各種形狀。
- 左右設有移動功能及固定塊供橢圓形研磨用，可快速精密研磨成型。
- V型塊設計穩固，上下微調功能，可精確的調整中心。左右大量移動時，可拆下微調螺桿，用固定塊定位，方便使用研磨橢圓形工件。
- MCL-4500 can be put on grinder machine with 818mm<sup>2</sup> to clamp large punches.
- It can shape quickly and precisely, with the moving function in left & right side and fixing block for oval grinding.
- The fine tuning function can adjust centre accurately. Using the fixing block and folding down the screw when large move is needed for left & right, can grind oval workpiece conveniently.

■規格:

- V型塊最大挾持範圍:  $\phi$  70mm
- V型塊上下調整範圍: 各30mm
- 滑板左右移動範圍: 各30mm
- 分割24等份、分度 $15^{\circ} \pm 5^{\circ}$
- 重量:27kg

■Specifications:

- Max champing diameter in V-slot:  $\phi$  70mm
- Travel of V-block:30mm
- Trans versal travel of slider:30mm
- Quantity of tooth:24
- Accuracy of disk: $15^{\circ} \pm 5^{\circ}$
- Weight:27kg