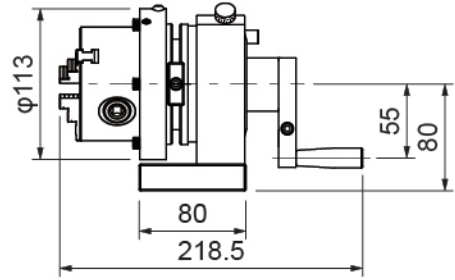
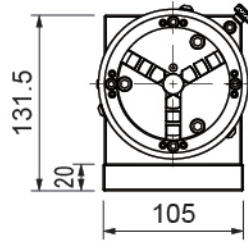
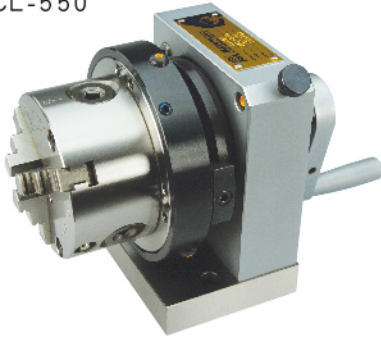




31055

三爪研磨機 3-JAW PUNCH FORMER

● MCL-550



- 三爪研磨器易於挾持工件，拆卸容易，使用方便快速。
- 因三爪夾頭累積公差，挾持不同尺寸工件時會有差異，故設計有水平及同心度調整功能，使用者可自行調整。

■規格:

- 旋轉中心高度:80mm
- 分割24等份、分度15度.±10"
- 三爪主體可穿過部位最大直徑:16mm
- 三爪主體外徑:85mm、長度:60mm
- 外徑把握: φ2-φ70mm
- 內徑把握: φ24-φ64mm
- 重量:10kg

■標準配件:

1. 三爪把手1只
2. 反爪1組
3. 六角板手3mm *1支、4mm *1支

- 3-Jaws punch former easy to clamping workpiece, easy to using and disassembly.
- Due to jaw chuck cumulative tolerance, for different size of workpiece the tolerance will different, adjustment design function user can adjust the horizontal and center.

■Specifications:

- Swivel center high: 80mm
- Indexing Div: 24(Every 15°)±10"
- 3-Jaws max diameter can pass through: 16mm
- 3-Jaws outer diameter: 85mm、length: 60mm
- Outer clamping gripping diameter: φ2-φ70mm
- Internal clamping gripping diameter: φ24-φ64mm
- Weight:10kg

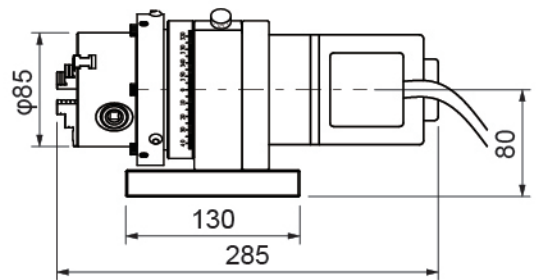
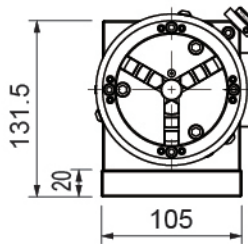
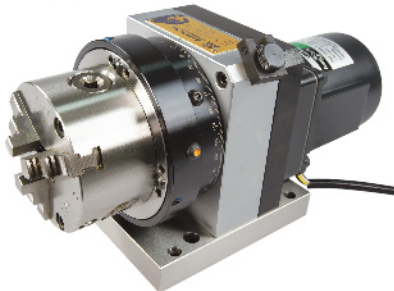
■Standard Accessories:

1. T-Handle
2. Contrary jaw
3. Hexagon Spanner 3mm ×1pcs、4mm ×1pcs

31058

電動三爪研磨機 3-JAW MOTOR PUNCH FORMER

● MCL-550AB



- 此款研磨器藉由馬達帶動，不需人工手搖操作，可節省加工時間。

■規格:

- 旋轉中心高度:80mm
- 分割24等份、分度15度.±10"
- 三爪主體可穿過部位最大直徑:16mm
- 三爪主體外徑:85mm、長度:60mm
- 外徑把握: φ2-φ70mm
- 內徑把握: φ24-φ64mm

■標準配件:

1. 三爪把手1只
2. 反爪1組
3. 六角板手3mm *1支、4mm *1支

- Motor punch former driven by motor, without hand manual operation, saving processing time.

■Specifications:

- Swivel center high: 80mm
- Indexing Div: 24(Every 15°)±10"
- 3-Jaws max diameter can pass through: 16mm
- 3-Jaws outer diameter: 85mm、length: 60mm
- Outer clamping gripping diameter: φ2-φ70mm
- Internal clamping gripping diameter: φ24-φ64mm

■Standard Accessories:

1. T-Handle
2. Contrary jaw
3. Hexagon Spanner 3mm ×1pcs、4mm ×1pcs 單位:mm

訂購編號 Order No.	型號 Model	電源 Power	轉速 Speed
31058-15	MCL-550AB×110V	AC 110V 50/60Hz 單相 SINGLE PHASE	16~233 R.P.M
31058-20	MCL-550AB×220V	AC 220V 50/60Hz 單相 SINGLE PHASE	16~233 R.P.M